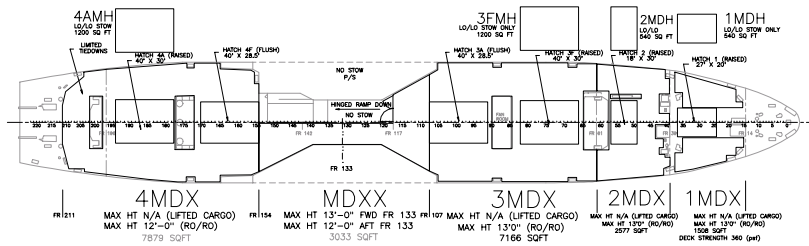


METEOR
RO/RO

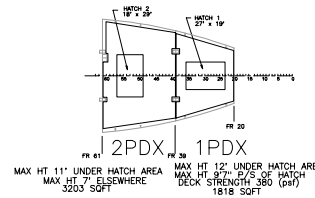
PRINCIPAL VESSEL CHARACTERISTICS

YEAR BUILT/CONVERTED:	1967	ENGLISH UNITS
FLEET:	RRR	
LENGTH (OVERALL)	540'-0"	
BEAM (MAXIMUM)	83'-0"	
MAST HEIGHT ABOVE BASELINE	153'-9"	
DRAFT (MAXIMUM)	29'-11"	
DRAFT (LIGHTSHIP)	14'-9"	
PROPULSION:	2 - 6 CYL OIL ENGS, 5.12" x 5.91"	
SERVICE SPEED	20.25 KNOTS	
RANGE (AT SERVICE SPEED)	8,800 N.M.L	
FUEL CAPACITY	1950 LTON	
MAXIMUM DEADWEIGHT	12,400 LTON	
REGISTERED TONNAGE (GROSS)	16,470	
RAMP TYPES:	STRAIGHT STERN, SIDE	
RAMP DIMENSIONS:	44'-11" L x 18'-0" W	
PORTABLE SIDE RAMP CAPACITY:	54 LTON	
SIDEPORT CLEARANCES:	15'-0" W x 13'-0" H	
STERN RAMP CAPACITY:	56 LTON	
STERN DOOR CLEARANCES:	18'-0" W x 13'-0" H	

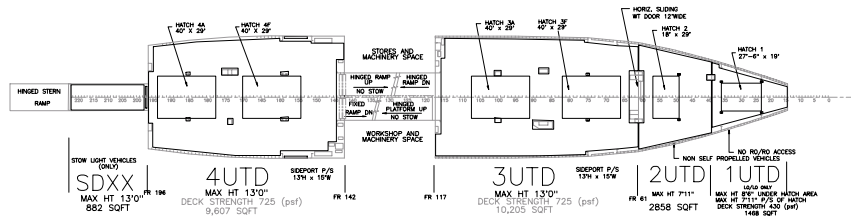
TOTAL STOWABLE LO/LO AREA = 14,738 SQ FT
TOTAL STOWABLE RO/RO AREA = 88,773 SQ FT



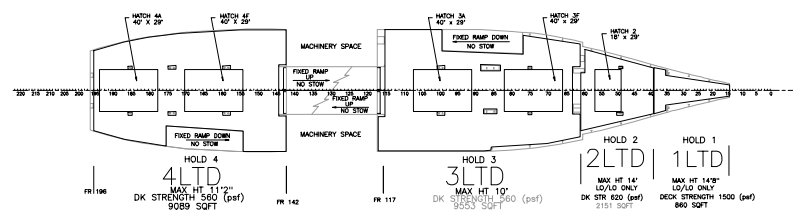
MAIN DECK (MDX)
TOTAL LO/LO AREA = 3,480 SQ FT
TOTAL RO/RO AREA = 22,163 SQ FT



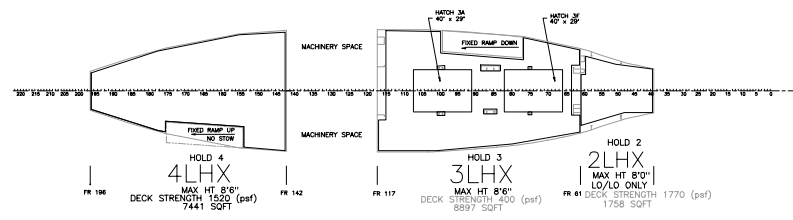
PLATFORM DECK (PDX)
(NO RO/RO ACCESS)
TOTAL LO/LO AREA = 5,021 SQ FT



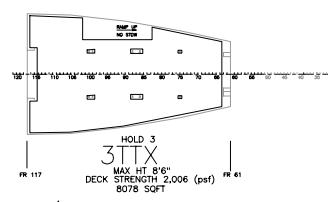
SECOND DECK (UTD)
TOTAL LO/LO AREA = 1,468 SQ FT
TOTAL RO/RO AREA = 23,552 SQ FT



1st PLATFORM DECK (LTD)
TOTAL LO/LO AREA = 3,011 SQ FT
TOTAL RO/RO AREA = 18,642 SQ FT



2nd PLATFORM DECK (LHX)
TOTAL LO/LO AREA = 1,758 SQ FT
TOTAL RO/RO AREA = 16,338 SQ FT



TANK TOP (TTX)
TOTAL RO/RO AREA = 8,078 SQ FT